



Haldene
Two Mile Ash, Milton Keynes MK8 8HT
£245,000

Nestled in the charming area of Haldene, Two Mile Ash, Milton Keynes, this delightful two-bedroom terraced house presents an excellent opportunity for both first-time buyers and those seeking a comfortable rental. Recently redecorated, the property boasts a fresh and inviting atmosphere, making it ready for you to move in and make it your own.

The property benefits from modern economy 7 heating, complemented by new electric heaters, ensuring warmth and comfort throughout the year. The enclosed garden is a lovely feature, perfect for enjoying the outdoors, whether it be for gardening, play, or simply unwinding in a private setting. Additionally, the property comes with allocated parking. To avoid disappointment we strongly advise an early inspection.

Entrance

Porch

Lounge/Diner

11'8" x 14'1" (3.57m x 4.31m)



Main Bedroom

11'7" x 8'4" (3.55m x 2.56m)



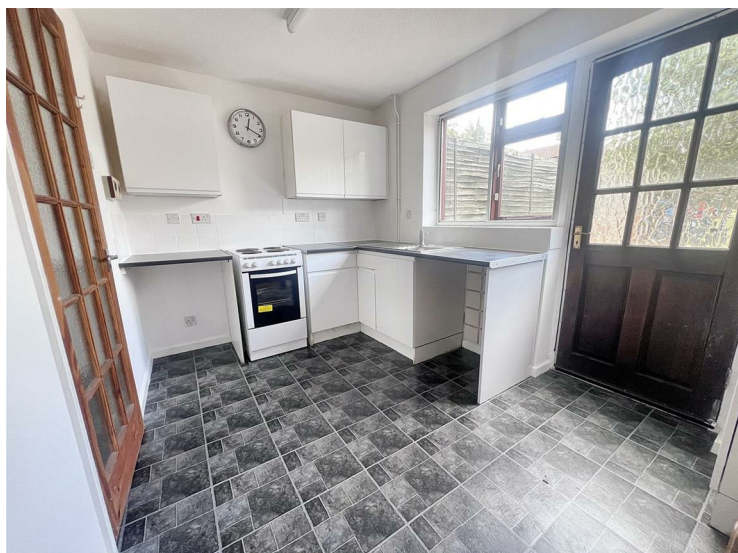
Bedroom 2

9'0" x 6'7" (2.76m x 2.01m)



Kitchen

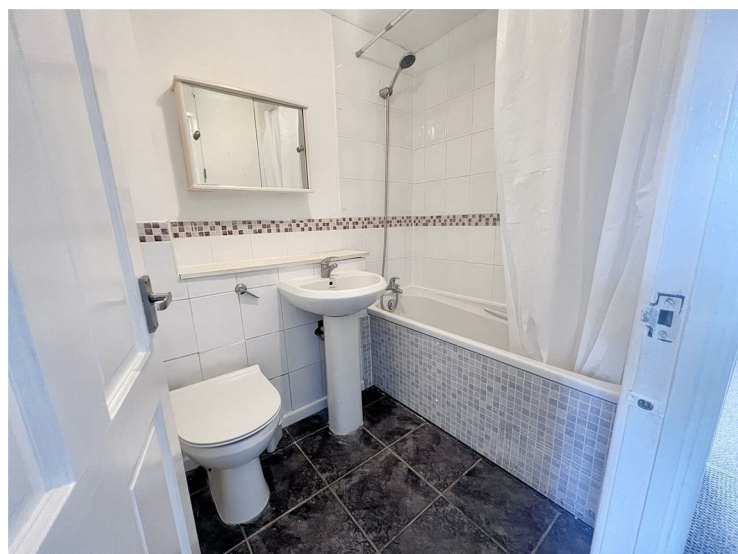
11'5" x 7'8" (3.50m x 2.36m)



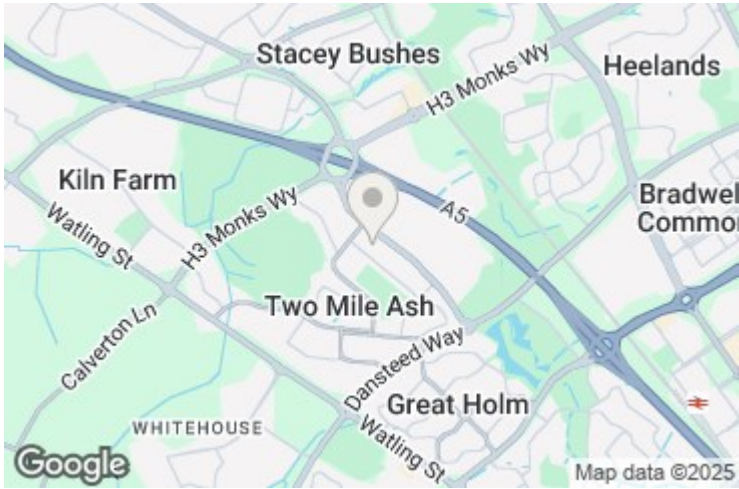
Landing

Bathroom

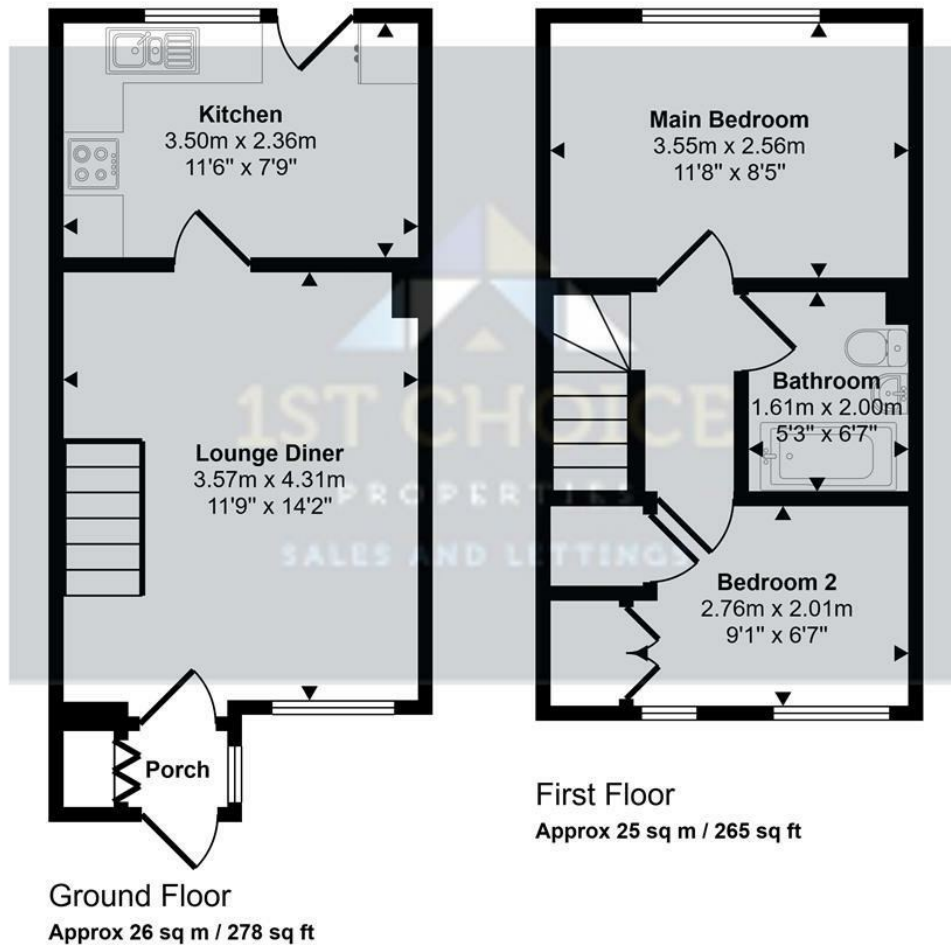
5'3" x 6'6" (1.61m x 2.00m)



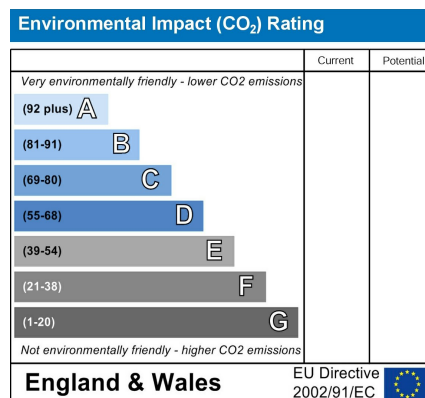
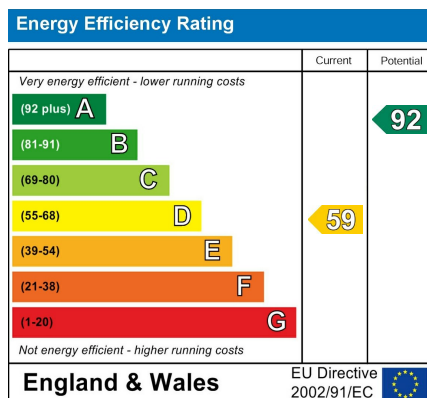
Garden



Approx Gross Internal Area
50 sq m / 543 sq ft



This floorplan is only for illustrative purposes and is not to scale. Measurements of rooms, doors, windows, and any items are approximate and no responsibility is taken for any error, omission or mis-statement. Icons of items such as bathroom suites are representations only and may not look like the real items. Made with Made Snappy 360.



www.1stchoice-properties.co.uk